

Kinship Navigator Program

Are you a Kinship Caregiver?

The Kinship Navigator Program can help kinship families locate available community resources and help provide individual support to kinship families via telephone, on-line support group, or through monthly newsletters that are mailed directly to your home.



Direct local Department of Social Service Agencies Contact Information

- Buchanan County: 276-935-8106
- City of Norton: 276-679-2709
- Dickenson County: 276-926-1661
- Lee County: 276-346-1010
- Russell County: 276-889-3031
- Scott County: 276-386-3631
- Tazewell County: 276-988-8500
- Wise County: 276-328-8056

Kinship Navigator Program

1280 Browning Hollow,
Clintwood, VA 24228

Phone: 276-926-1661 or 276-926-7169
Fax: 276-926-6414



Kinship Navigator Program

Serving 8 Great Localities in Southwest Virginia

Dickenson County
Buchanan County
Tazewell County
Russell County
City of Norton
Scott County
Wise County
Lee County



Navigating the Seas of Kinship



What is the Kinship Navigator Program?

There are more than 180,000 children that are living with grandparents or other relatives in Virginia

In 2018 the state established six Kinship Navigator programs in the state to provide services to kinship families.

There are many factors that lead into relative care, including:

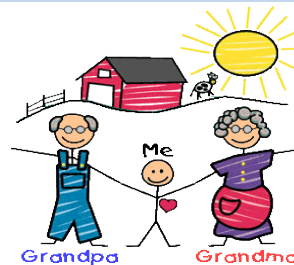
- Parental Substance Abuse
- Illness and Death
- Extended military deployment
- Financial Hardship
- Incarcerations
- Mental Health Issues of parents

If you are currently raising your grandchild or a kinship relative then you may be interested in what this program has to offer.

Here to Help You

The Kinship Navigator Program has 4 major areas of focus:

- **Information**... services available local, federal, and state; community activities (libraries, school events, camps, after school programs, parks, programs such as junior fire)
- **Education**... topic sessions such as discipline, internet use, parenting a second time around, dealing with children that have experienced trauma, importance of self care for the caregiver
- **Connection to Resources**... financial, legal, educational, medical, community agencies, kinship support groups and case management.
- **Advocacy**... face to face visits, supportive telephone counseling,



"Families are the compass that guides us. They are the inspiration to reach great heights, and our comfort when we occasionally falter." — Brad Henry



Family is Everything

Here are some resources the Kinship Navigation Program can help direct you to:

- ♦ Physical Health/Dental Health Services
- ♦ Benefits (SNAP, Medicaid, Child Care, TANF, WIC)
- ♦ Housing
- ♦ School Information, Enrollment, etc.

For more information be sure to check us out at our website navigatekinship.com and be sure to join our Kinship Navigator Page on Facebook.